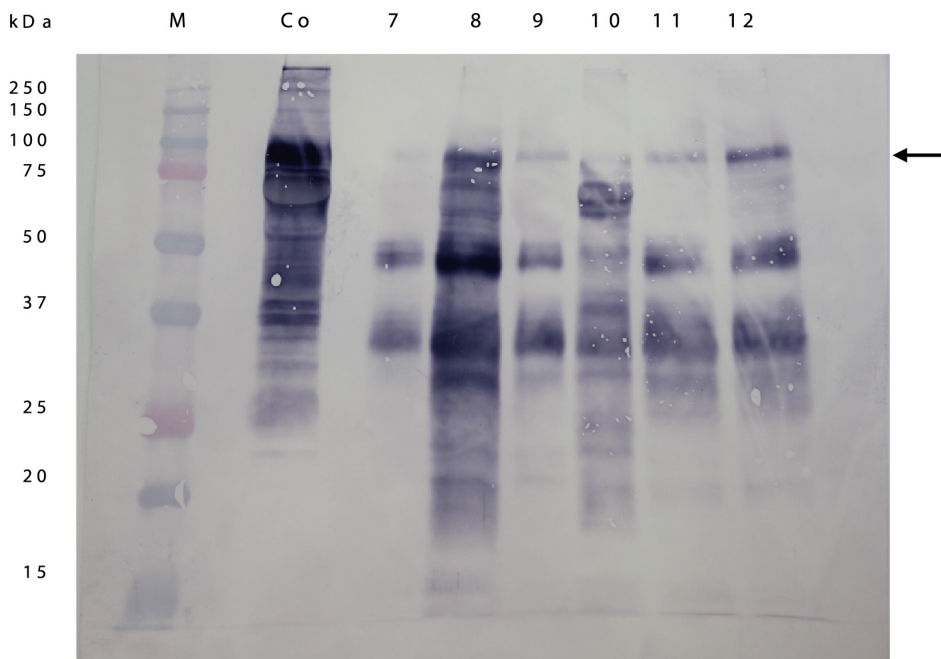
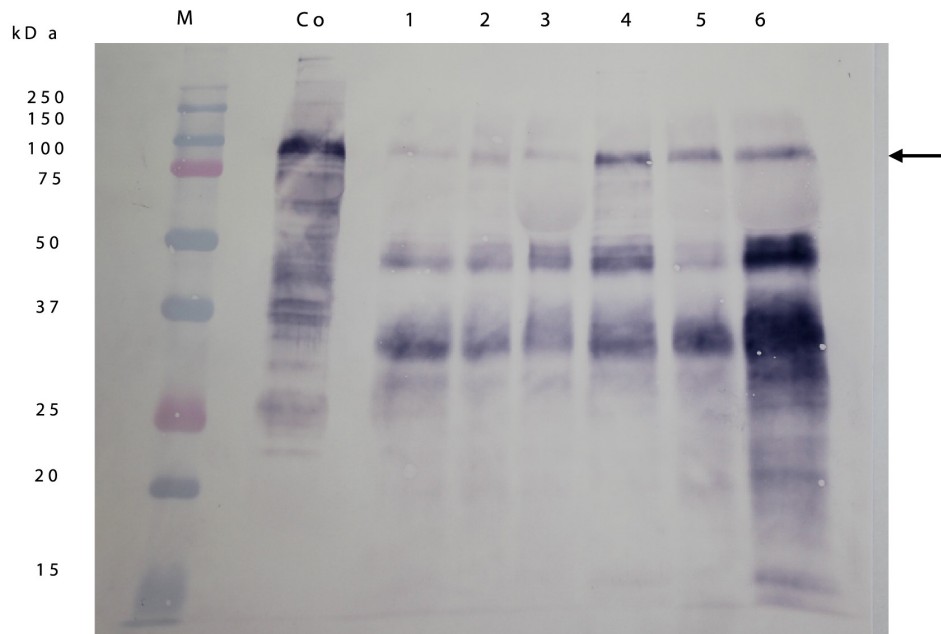


SUPPLEMENTARY DATA 2

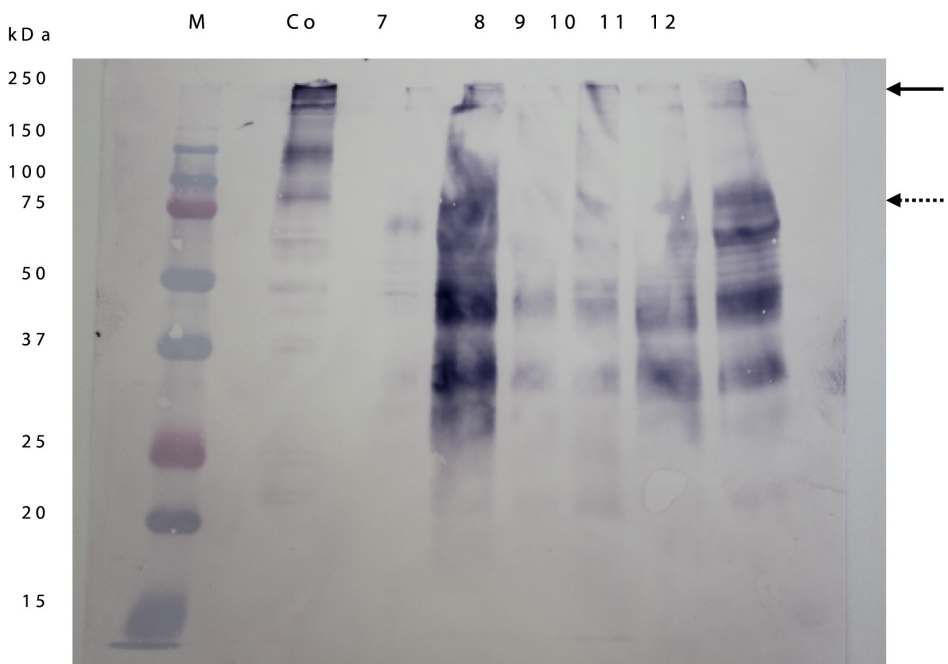
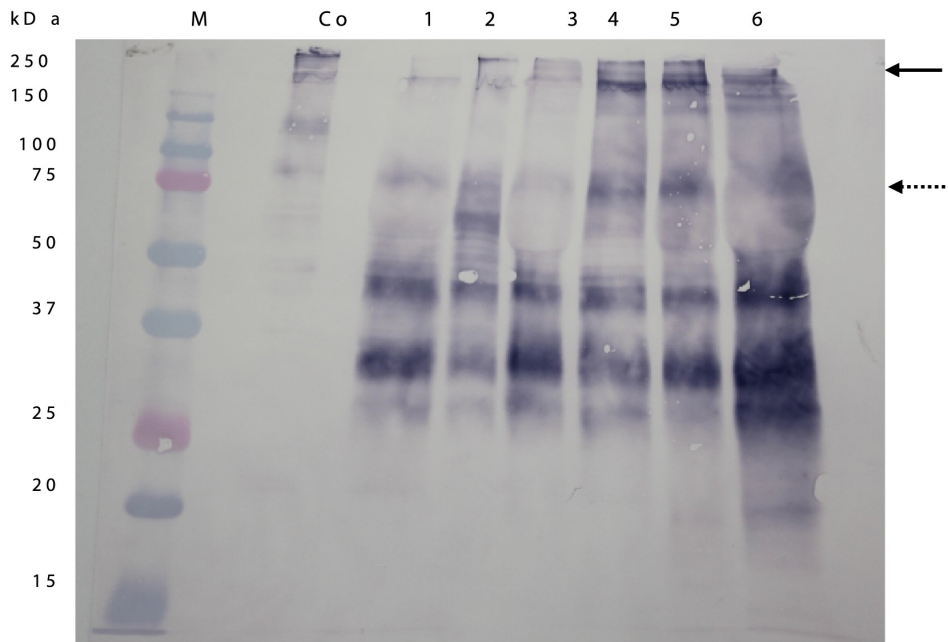
Shows immunoblot analyses of urine samples of healthy (Nos. 1-12) cats using antibody to feline IgM μ -chain or IgG Fc fragment (γ -chain) including data of Figure 1C under non-reducing and reducing conditions. The feline serum sample used in Figure 1C was used as a control sample (C). Arrows indicate H-chain of IgM or IgG and IgM pentamer or IgG monomer in the presence (DTT+) or absence (DTT-) of DTT, and dotted arrows indicate H-chain of IgM or IgG detected in the absence of DTT. M represents marker proteins.

Inmunoglobulins

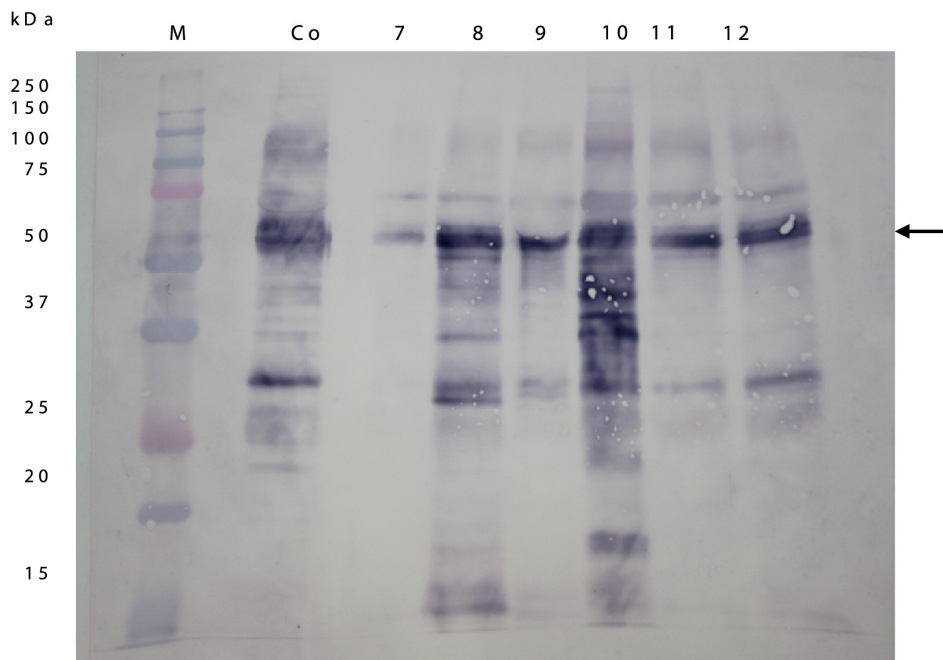
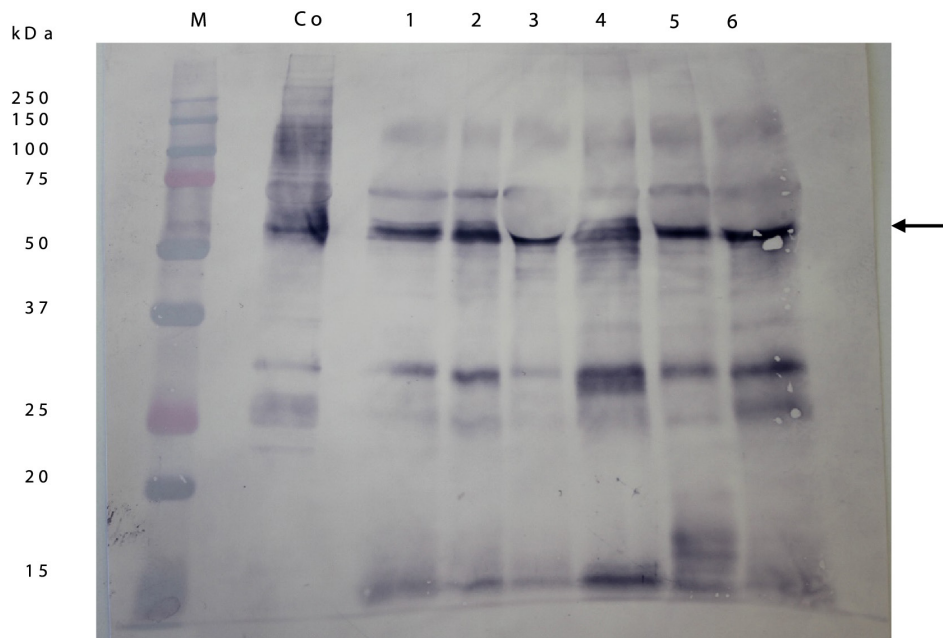
IgM (+DTT)



IgM(- DTT)



IgG (+DTT)



IgG(- DTT)

